

NORTHCOTE GALLERY CHELSEA



Press Release

Botanica Somnia Hannah Horn

4 September - 20th September 2014

Hannah Horn's new exhibition demonstrates the progression of an artist who combines her rich imagination, with a focused and observant eye for nature.

Hannah's fascination with the structure and form of insects, enables her to experiment with influences that have a resonance with 19th century book illustration, while having a very contemporary aesthetic. Horn's fine ink drawing, has a wonderful precision that is reminiscent of historical natural history books. It is this refinement, combined with a bold use of colour, that give her pieces so much energy.

She is able to combine this beautiful technical approach, with a playful set of ideas. Sometimes the drawings are taken straight from nature, at other times there will be extra imagery incorporated into the forms that may not be immediately apparent. These subtle forms often emerge, as you watch and examine the drawings.

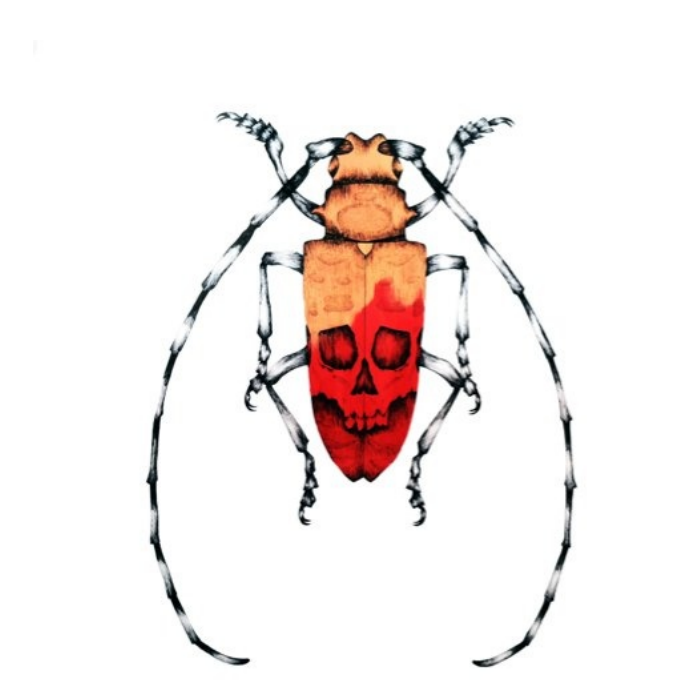
Seeing a complete body of Horn's work, shows her constant exploring of both the medium and the subject. They are elegant, beautifully realised drawings that have a language to them that goes beyond observational drawing. Each drawing demonstrates the beauty of the subject and offers an insight into the artist's interpretation of the world around her.



White Tiger Bee



Giraffe Bee



Long Horned Bee

OPENING TIMES
11am - 6pm Tuesday - Saturday
12pm - 4pm Sunday
PRIVATE VIEW
By Appointment

110 Northcote Road, Battersea, London SW11 6QP
253 King's Road, Chelsea, London SW3 5EL

t: 020 7351 0830 e: info@northcotegallery.com w: northcotegallery.com t: info.northcote